

## eLHMS1 Series

High Mast LED Area Luminaire Series 1

### Product Description

The eLHMS1 Series LED high mast luminaire features a low profile, sleek architectural design. Durable and reliable, and producing up to 61,000 lumens, the HMS1 is ideal for the tall mounting heights found in dockyards, roadway and port applications. The eLHMS1 Series utilizes state of the art Cree LEDs combined with in-house optics for the precise control and superb light quality.

Applications: Industrial, Warehouse Sites, Dockyards, Ports, Roadways, Parking Lots.

### Product Performance

- Wattage: 238, 334 or 476W
- Input Voltage: 277-480V
- CCT: 3000K - 5000K
- CRI: 70-90 CRI
- UL1598 Compliant
- Safety cable on driver compartment door standard
- Drivers and surge protection are easily accessible and feature quick connects for rapid replacement
- 0-10V dimmable power supply
- 5 year warranty

### Available Accessories (See page 3 for details)

- Trunnion Mount
- Round Mast Mount Kit
- House Side Shield



238W Unit



334W and 476W Units

Fixture Weight 238W: 23lbs  
334 and 476W: 44lbs

### Ordering Guide

Example: eLHMS1-5WR3350K7-WH

eLHMS1- Series	XX Distribution	XXX Approximate Lumens*	XXXX CCT Code	XX Voltage	-XX Fixture color	-HSS Options (Factory Installed)
eLHMS1	2MR - Type 2	300 - 30,515 lumens, 238W	30K8 - 3000K, 80 CRI	UH - 277-480V	WH - White	HSS - House Side Shield
	3MR - Type 3	440 - 44,188 lumens, 334W	40K7 - 4000K, 70 CRI		SV - Silver	
	4MR - Type 4	610 - 61,030 lumens, 476W	40K8 - 4000K, 80CRI		BL - Black	
	5MQ - Type 5, Square		50K7 - 5000K, 70CRI		BZ - Bronze	
	5WR - Type 5, Round		50K8 - 5000K, 80CRI			
			AMKX - Amber, Special Order			

\* Use ies files for actual lumen values for specific CCT and CRI configurations.

### Accessory Guide (Field installed, order as separate line item)

Accessory Number*	Description
HMS-HSS	House Side Shield
HMS-RM01XX	Round Mast Mount Kit
HMS-TK01XX	Trunnion Mount Kit

\* XX = WH, SV, BL or BZ

### Product Specifications

#### Construction & Materials

- Powder coated aluminum housing
- UV Stabilized single polycarbonate lens
- Robust low profile design with active thermal management

#### Optical System

- Type II, III, IV, V round, V square

#### Electrical System

- Input Voltage: 277-480VAC
- Power Factor: > 0.9
- Total Harmonic Distortion: <20%
- Operating Temperature Range: -40°C to 60°C

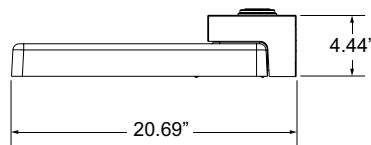
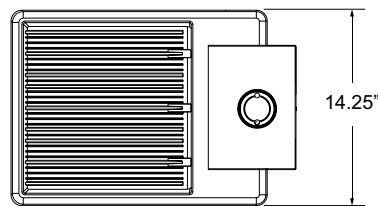
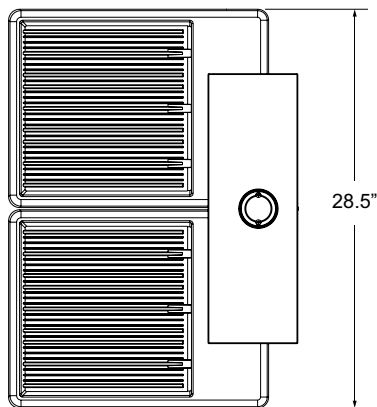
#### Testing & Certifications

- cETLus Listed
- UL1598, CSA STD.22.2 compliant
- Suitable for Wet Locations
- RoHS Compliant
- Can meet ARRA Buy America requirements as required

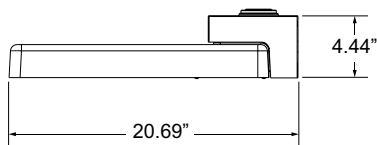
#### Lumen Maintenance

- L90@ 25C >190,000 hours

### Dimensions



EPA: 0.50



EPA: 0.90

## eLHMS1 Series Accessories

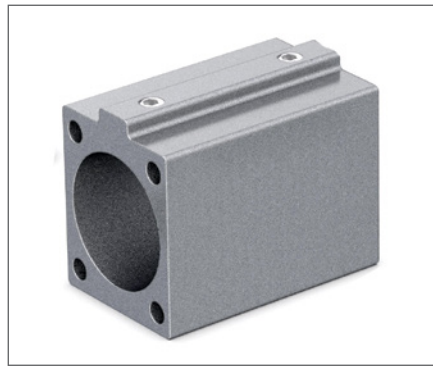
### Accessory Guide (Field installed, order as separate line item)

Accessory Number*	Description
HMS-HSS	House Side Shield
HMS-RM01XX	Round Mast Mount Kit
HMS-TK01XX	Trunnion Mount Kit

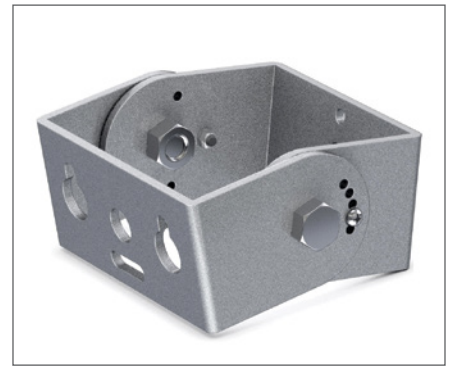
\* XX = WH, SV, BL or BZ



HSS - House Side Shield



HMS-RM01XX - Round Mast Mount Kit



HMS-TK01XX - Trunnion Mount Kit

eLuminaire maintains a tolerance of +/- 7% on flux and power measurements. The information in this document is subject to change without notice.