

eLALS1 Series

LED Area Luminaire Series 1

Product Description

The eLALS1 Series LED area luminaire features traditional 'shoebox' luminaire look with a sleek architectural profile. The fixture is modestly smaller than traditional 'shoe boxes' for easier handling and installations, yet retains the classic look. The eLALS1 Series utilizes state of the art Cree LEDs combined with in-house optics for the precise control and superb light quality.

Applications: Industrial, Retail, Warehouse Sites, Parking Garages, Parking Lots.

Product Performance

- Wattage Range: 100W-250W
- Input Voltage: 120-277V, 277-480V
- CCT: 3000K - 5000K, Amber available
- CRI: 70-90 CRI
- UL1598 Compliant
- Safety cable on driver compartment door standard
- Drivers and surge protection are easily accessible and feature quick connects for rapid replacement
- 0-10V dimmable power supply
- 5 year warranty

Available Accessories

- Slipfitter Mount
- Wall Mount
- 6" Arm Mount for Square Poles
- 6" Arm Mount for Round Poles
- Trunnion Mount
- Round Mast Mount Kit
- House Side Shield



Ordering Guide

Example: eLALS1-5WR24050K7-WH

eLALS1-Series	XX Distribution	XXX Target Lumens	XXXX CCT Code	XX Voltage	-XX Fixture color	-HSS Options (Factory Installed)
eLALS1	2MR - Type 2	120 - 14,000 lumens, 104W	30K8 - 3000K, 80 CRI	(Blank) - 120-277V	WH - White	HSS - House Side Shield
	3MR - Type 3	240 - 21,000 lumens, 158W	40K7 - 4000K, 70 CRI	UH - 277-480V	SV - Silver	
	4MR - Type 4	300 - 28,000 lumens, 250W	40K8 - 4000K, 80CRI		BL - Black	
	5MQ - Type 5, Square		50K7 - 5000K, 70CRI		BZ - Bronze	
	5WR - Type 5, Round		50K8 - 5000K, 80CRI			
			AMKX - Amber, Special Order			

Note: Due to amber characteristics, fixture output will be approximately 40% of 4000K or 5000K

Accessory Guide (Field installed, order as separate line item)

Accessory Number*	Description	Accessory Number*	Description
ALS-HSS	House Side Shield	ALS-AE06FXX	6" Arm Extension Kit for Flat Pole
ALS-SF01XX	Slipfitter Mount Accessories	ALS-AE06R4XX	6" Arm Extension Kit for 4" Round Pole
ALS-TK01XX	Trunnion Mount Kit	ALS-AE06R5XX	6" Arm Extension Kit for 5" Round Pole
ALS-WM01XX	Wall Mount Kit	ALS-AE06R6XX	6" Arm Extension Kit for 6" Round Pole
ALS-RM01XX	Round Mast Mount Kit		

* XX = WH, SV, BL or BZ



Product Specifications

Construction & Materials

- Powder coated aluminum housing
- UV Stabilized single polycarbonate lens
- Robust low profile design with active thermal management

Optical System

- Type II, III, IV, V round, V square

Electrical System

- Input Voltage: 120-277VAC, 277-480VAC
- Power Factor: > 0.9
- Total Harmonic Distortion: <20%
- Operating Temperature Range: -40°C to 60°C

Testing & Certifications

- cETLus Listed
- UL1598, CSA STD.22.2 compliant
- Suitable for Wet Locations
- RoHS Compliant
- DesignLights Consortium® and DesignLights Consortium® Premium Qualified Product
- Can meet ARRA Buy America requirements as required

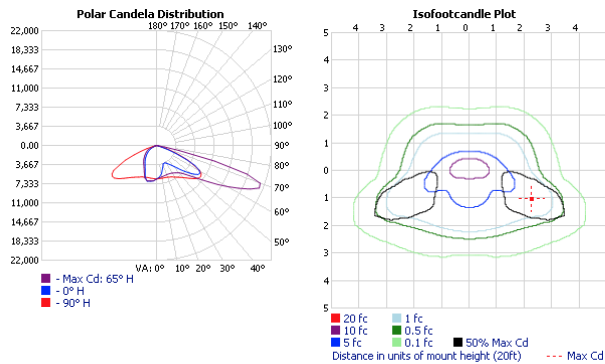
Lumen Maintenance

- L90@ 25C >50,000 hours

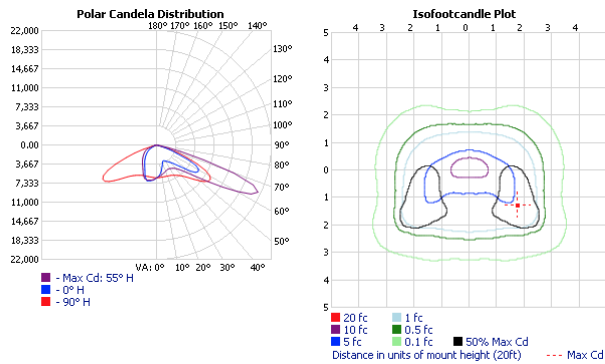
Photometry

All published photometric testing data is performed to IESNA LM79-08 standards by a NVLAP accredited laboratory. To obtain an IES file specific to your project contact sales@eluminaire.com.

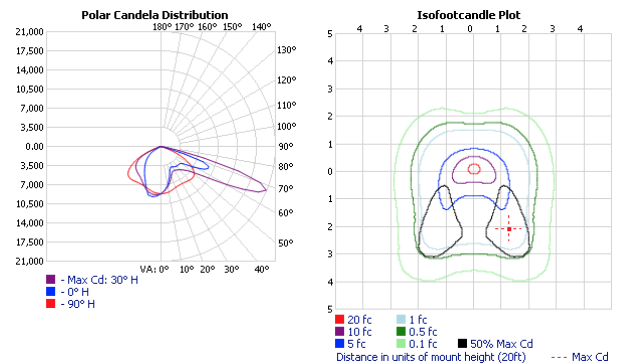
TYPE II



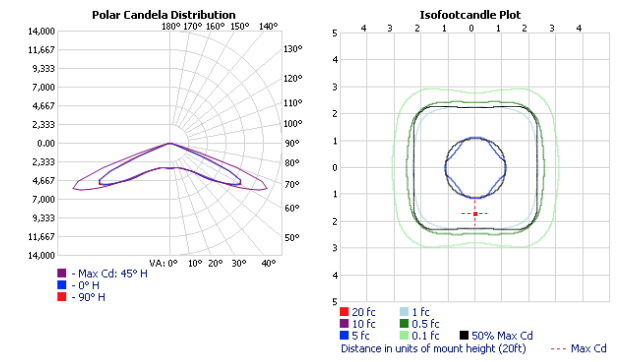
TYPE III



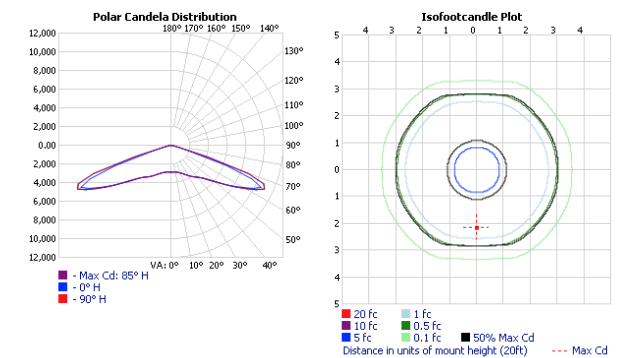
TYPE IV



TYPE V SQUARE

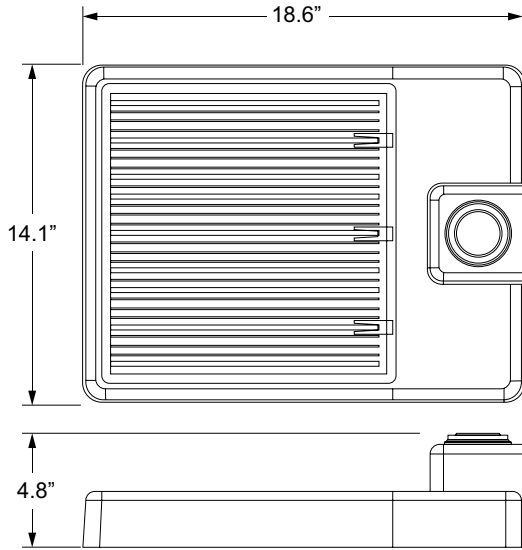


TYPE V ROUND



eLuminaire maintains a tolerance of +/- 7% on flux and power measurements. The information in this document is subject to change without notice.

Dimensions

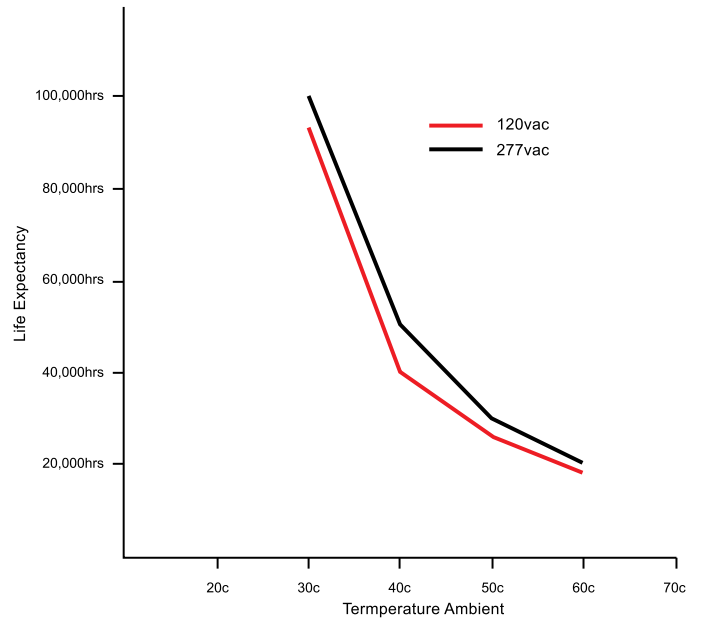


EPA: 0.5

Fixture Weight: 15.0 lbs

Thermal De-Rating Curve

Life expectancy vs ambient temperature



eLuminaire maintains a tolerance of +/- 7% on flux and power measurements. The information in this document is subject to change without notice.

eLALS1 Series Accessories

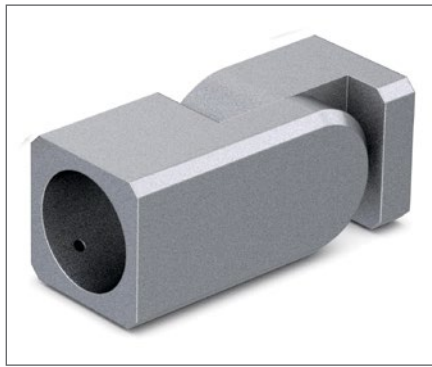
Accessory Guide (Field installed, order as separate line item)

Accessory Number*	Description	Accessory Number*	Description
ALS-HSS	House Side Shield	ALS-AE06FXX	6" Arm Extension Kit for Flat Pole
ALS-SF01XX	Slipfitter Mount Accessories	ALS-AE06R4XX	6" Arm Extension Kit for 4" Round Pole
ALS-TK01XX	Trunnion Mount Kit	ALS-AE06R5XX	6" Arm Extension Kit for 5" Round Pole
ALS-WM01XX	Wall Mount Kit	ALS-AE06R6XX	6" Arm Extension Kit for 6" Round Pole
ALS-RM01XX	Round Mast Mount Kit		

* XX = WH, SV, BL or BZ



HSS - House Side Shield



ALS-SF01XX - Slipfitter Mount Accessories



ALS-TK01XX - Trunnion Mount Kit



ALS-WM01XX - Wall Mount Kit



ALS-RM01XX - Round Mast Mount Kit



ALS-AE06FXX - 6" Arm Extension Kit for Flat Pole



ALS-AE06R4XX - 6" Arm Extension Kit for 4" Round Pole



ALS-AE06R5XX - 6" Arm Extension Kit for 5" Round Pole



ALS-AE06R6XX - 6" Arm Extension Kit for 6" Round Pole

eLuminaire maintains a tolerance of +/- 7% on flux and power measurements. The information in this document is subject to change without notice.